


# CUSTOM NEON®

TECHNICAL SPECIFICATIONS  
IP67 WATERPROOF OUTDOOR LED NEON



## CUSTOM NEON® OFFERS OUTDOOR SIGN SOLUTIONS WITH AN **IP67** **WATERPROOF** RATING.

We specialise in creating custom-made signs to match our customers' specific shape and design requirements.

Available in the same range of stunning colours as our indoor signs, our exterior products are designed to offer the same brilliant neon glow while providing a far greater level of protection against the elements.

### ADVANCED SINGLE BODY DESIGN

Our outdoor light signs are created as one body - with no visible joins - to prevent water from getting in.

### LONG LASTING

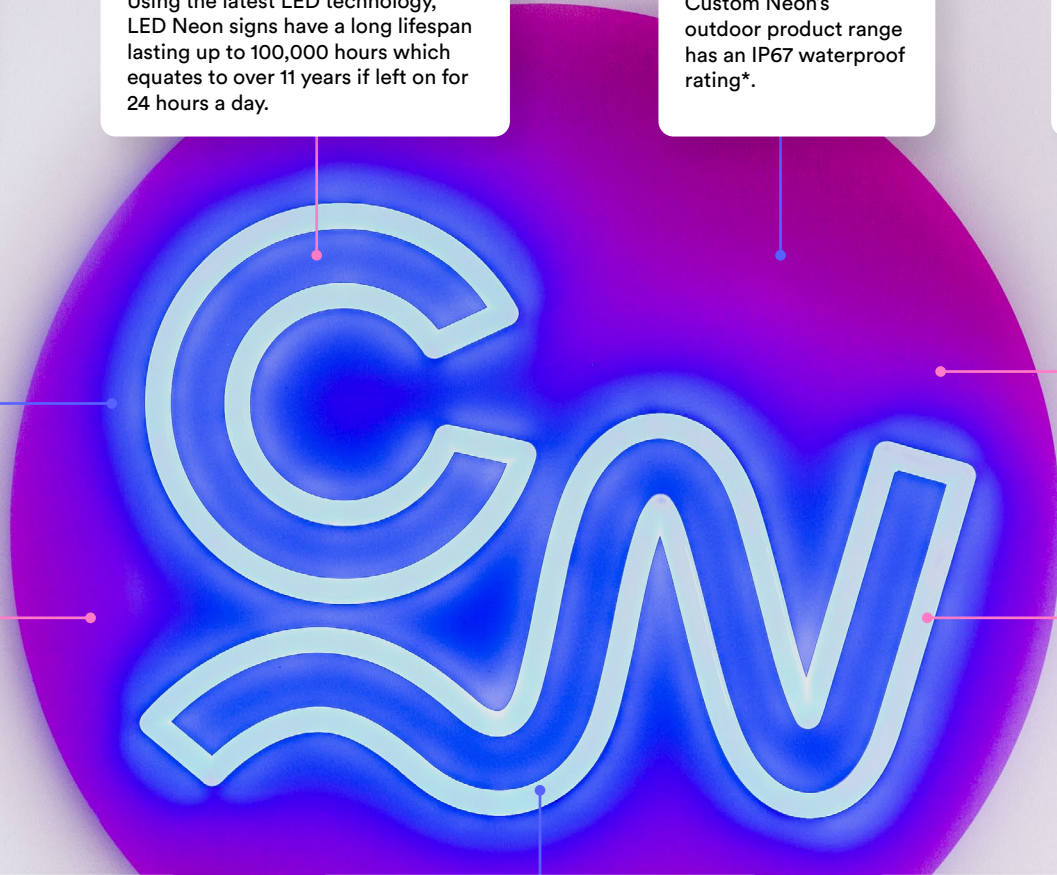
Using the latest LED technology, LED Neon signs have a long lifespan lasting up to 100,000 hours which equates to over 11 years if left on for 24 hours a day.

### RATING

Custom Neon's outdoor product range has an IP67 waterproof rating\*.

### ENERGY CONSUMPTION

Due to the low voltage of LED Neon, it is a much more cost-efficient alternative to glass neon signs, saving up to 70% in energy cost in some situations.



### SUITABLE FOR ALL OUTDOOR APPLICATIONS

Our Acrylic LED Neon signage range has been specifically developed for outdoor applications. They are manufactured to withstand the weather, using the latest technology to remove joins and prevent water penetration.

### WATERPROOF AND UV PROTECTION

The signs are manufactured using a gapless liquid acrylic process on the internal body of the sign, and have an outer coating to give them UV protection.

### SAFETY

LED Neon is a much safer alternative to glass neon tubing as it runs on 12V and remains cool to touch when illuminated. Glass neon signs run at a much higher voltage of between 3KV-18KV and can become extremely hot. LED Neon is shatterproof, unlike glass neon signs, making it safer and easier to install or transport.

**\*Note on IP rating:** An IP rating is a certification proving a product meets a certain standard of water and dust proofing resistance. IP67 products are protected from immersion in water with a depth of up to 1 metre or 3.3 feet for up to 30 minutes. They are not for underwater use.

# WIDE RANGE OF COLOURS

AVAILABLE IN 18 COLOURS SO YOU CAN CUSTOMISE YOUR DESIGN.

Eight of these are white when the sign is turned off and coloured when the sign is switched on. The remaining ten colours come with a coloured tube, so the sign shows its colour even when it's turned off.

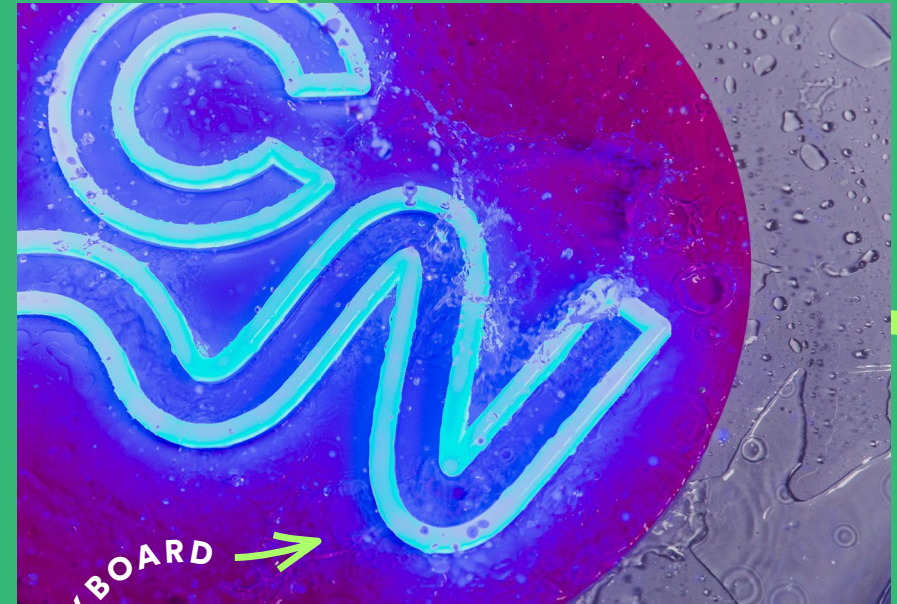
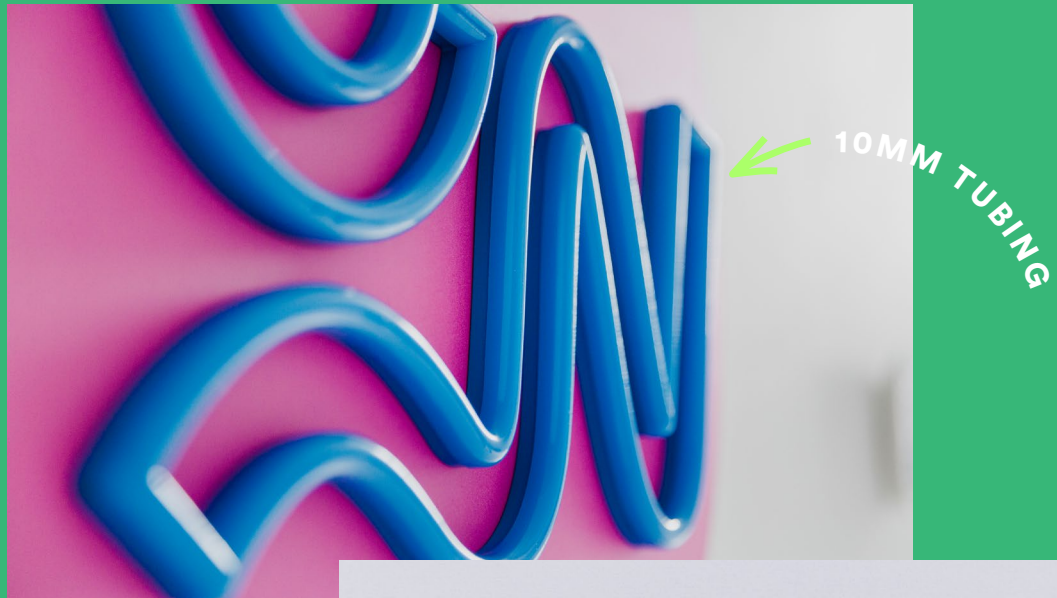
OFF



ON



# FEATURES



- Available in 10mm tubing.
- LED tubing contains a flexible SMD LED strip that has low power consumption and a long lifespan.
- Outdoor LED Neon signs can be mounted to any backboard type or supplied without a backboard.
- UV print.
- Coloured acrylics are available.
- Can be programmed for 12 step animation.
- Connection cords are subtly visible at the back of the sign.
- The remote control and dimmer are not waterproof, and the dimmer must be kept enclosed and away from the elements.

# TECHNICAL INFORMATION



LED Colour	White	Light Red	Golden Yellow	Lemon Yellow	Green	Ice Blue	Electric Blue	Purple	Pink	Warm White	Red	Orange	Mint	Deep Green	Tropical Blue	Deep Blue	Cotton Candy	Deep Pink
Panel Colour	White	White	Golden Yellow	Lemon Yellow	White	White	White	Purple	White	Warm White	Red	Orange	Mint	Deep Green	Tropical Blue	Deep Blue	Cotton Candy	Deep Pink
Bottom Colour	White	White	Golden Yellow	Lemon Yellow	White	White	White	Purple	White	Warm White	Red	Orange	Mint	Deep Green	Tropical Blue	Deep Blue	Cotton Candy	Deep Pink
Stroke Width	12mm																	
Thickness	10mm																	
Voltage	12V DC																	
Wattage	10mm 8W/m																	
CCT/nm (Colour Temp)	6500k	619nm	590nm	575nm	520nm	495nm	469nm	405nm	430nm	3000k	619nm	606nm	570nm	520nm	495nm	469nm	610nm	430nm
Lumens	24-26Lm/ft	24-26Lm/ft	24-26Lm/ft	24-26Lm/ft	24-26Lm/ft	24-26Lm/ft	24-26Lm/ft	24-26Lm/ft	24-26Lm/ft	24-26Lm/ft	24-26Lm/ft	24-26Lm/ft	24-26Lm/ft	24-26Lm/ft	24-26Lm/ft	24-26Lm/ft	24-26Lm/ft	24-26Lm/ft
CRI	80Ra	80Ra	80Ra	80Ra	80Ra	80Ra	80Ra	80Ra	80Ra	80Ra	80Ra	80Ra	80Ra	80Ra	80Ra	80Ra	80Ra	80Ra
Dimming	10-100% with most incandescent, low-voltage magnetic, and low-voltage electronic dimmers*																	
Operating Temp	-25°C (-13°F) to 45°C (113°F)																	
Storage Temp	-10°C (14°F) to 30°C (86°F)*																	
LED Type	2835 SMD LEDs (spaced every 1/3")																	
Rating	Outdoor IP67																	
Rated Life	Up to 100,000 hours																	

● Do not install in locations exposed to inclement weather or extreme temperature conditions (i.e. -25°C (-13°F) and below) ● Minimum loads may apply

## TECHNICAL SPECIFICATIONS

### Material:

Acrylic

### Sizes of LED Neon:

10mm

### IP rating:

IP67 waterproof

### Power consumption of LED Neon:

12W/m

### Power:

12Vdc adaptor which plugs into a power socket or can be hardwired by a professional electrician.

### Standard exit cord length:

1.5m or 4ft 11in

### Standard adaptor length:

1.5-2m or 4ft 11in-6ft 7in, giving overall 3+m or 9ft 10in of electrical cable.

### Max LED Neon metreage

#### per exit cord:

10mm = 8m or 26ft 3in

#### Thickness of acrylic:

5mm

#### Maximum size of a single

#### piece of acrylic:

240cm x 120cm or 7ft 10in x 3ft 11in

#### Lifespan:

Up to 100,000 operational hours

#### Warranty:

2 years



# LIGHT, *YOUR WAY.*



**IF YOU HAVE ANY  
QUESTIONS PLEASE  
GET IN TOUCH  
WITH US.**



UK	<a href="mailto:info@customneon.co.uk">info@customneon.co.uk</a>	020 3608 5978
AU	<a href="mailto:info@customneon.com.au">info@customneon.com.au</a>	1800 725 574
US	<a href="mailto:info@customneon.com">info@customneon.com</a>	888 262 4851

**CUSTOMNEON®**